

Mayplas

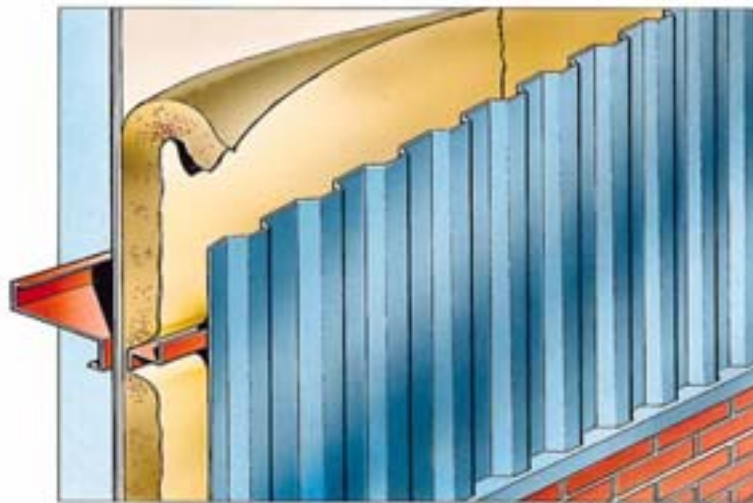
The Insulation Converter

513 Paper Faced Rockwool Roll

Product Guide

Mayplas 513 Paper Faced Rockwool Roll is designed for use in thermal & acoustic applications where additional tear strength is a requirement

The paper facing forms a vapour check to BS 2972:1989 and is usually placed on the warm side of the structure



- * **60mm - 180mm thicknesses**
- * **Vapour check to BS 2972:1989**
- * **Bitumenised kraft paper facing**
- * **Ideal for use under metal cladding**



FM 11012

Peel Industrial Estate - Chamberhall St - Bury - Lancashire BL9 0LU

Tel: 0161-447-8320 Fax: 0161-447-8333 E-mail: sales@mayplas.co.uk

Product Specification **5 I 3 Paper Faced Rockwool Roll**

The product consists of Rockwool Cladding Roll faced on one side with bitumenised kraft paper

Roll Dimensions:

60mm x 1000mm x 6.40m (6.40 m²)
80mm x 1000mm x 5.00m (5.00 m²)
100mm x 1000mm x 4.80m (4.80 m²)
120mm x 1000mm x 4.00m (4.00 m²)
150mm x 1000mm x 3.20m (3.20 m²)
160mm x 1000mm x 3.00m (3.00 m²)
180mm x 1000mm x 2.70m (2.70 m²)

Kraft Paper Facing:

90 gsm bitumen kraft
Vapour Check to BS 2972:1989

Thermal Resistance (R value):

60mm: 1.50 m²K/W
80mm: 2.00 m²K/W
100mm: 2.50 m²K/W
120mm: 3.00 m²K/W
150mm: 3.75 m²K/W
160mm: 4.00 m²K/W
180mm: 4.50 m²K/W

Rockwool Reaction to Fire Classification:

A1 as defined in BS EN 13501-1

Fixing

Fixing detail is dependent upon the intended application. However in most circumstances the paper facing is placed on the warm side of the structure

